

M

CHELMSLEY WOOD

Birmingham B37 5TT

Total development

3,264 sq.ft

(304 sq.m)



M UNIT 51

Chelmsley Wood Shopping Centre,
Birmingham,
B37 5TT

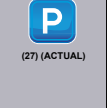
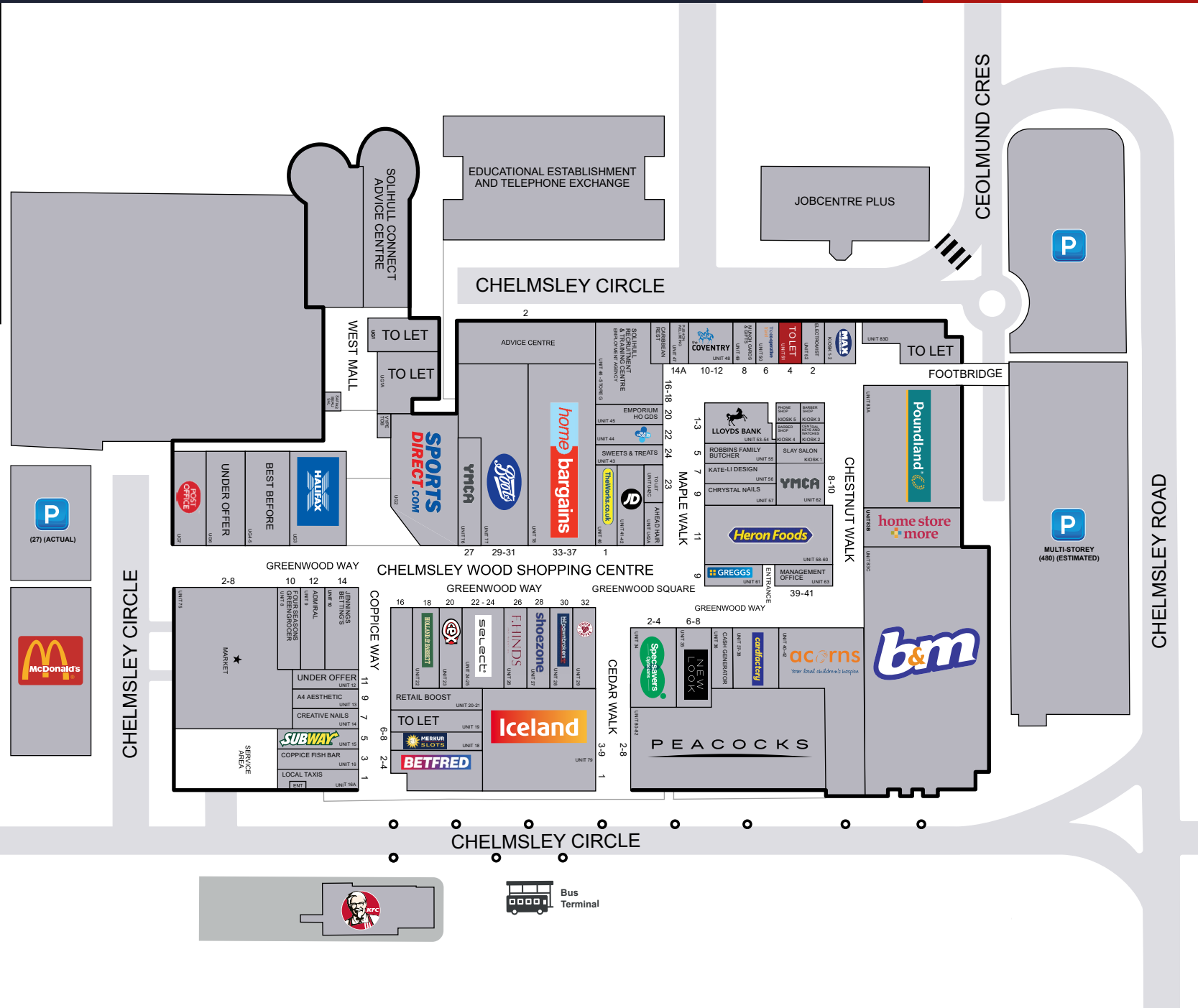
Local Occupiers Include





CHELMSLEY WOOD

Site Plan



home bargains

Sports Direct

YMCA

HAIRFX

UNDER OFFER

BEST BEFORE

UNDER OFFER

MARKET

SERVICE AREA

UNDER OFFER

SUBWAY

COPPICE FISH BAR

LOCAL TAXIS

BETFRED

Iceland

TO LET

MERRUK SLOTS

SHOEZONE

FLINDS

SELECT

RETAIL BOOST

SHOES

SPICES

NEW LOOK

CONFECTORY

CASH GENERATION

ACORN'S

PEACOCKS

home store more

Poundland

HERON FOODS

KATE-LI DESIGN

CHRISTAL NAILS

YMCAs

SLAY SALON

ROBBINS FAMILY BUTCHER

LLOYDS BANK

KOSKOS

TOILET

COVENTRY

JOBCENTRE PLUS

**DESCRIPTION**

Chelmsley Wood Shopping Centre is a dominant convenience and community shopping centre in the heart of the town. The centre benefits from an annual footfall of 7.5m people and is anchored by a 75,000 sq.ft ASDA supermarket. Other national retailers include Iceland, Home Bargains, New Look, Sportsdirect, Poundland and Boots.

UNIT SIZE

1,195 sq.ft (111 sq.m)

RENT

£16,000

RATEABLE VALUE

£10,750

SERVICES

All mains services are available.

SERVICE CHARGE & INSURANCE

Service Charge: £5,717 plus VAT. Insurance: £601.89

ENERGY PERFORMANCE

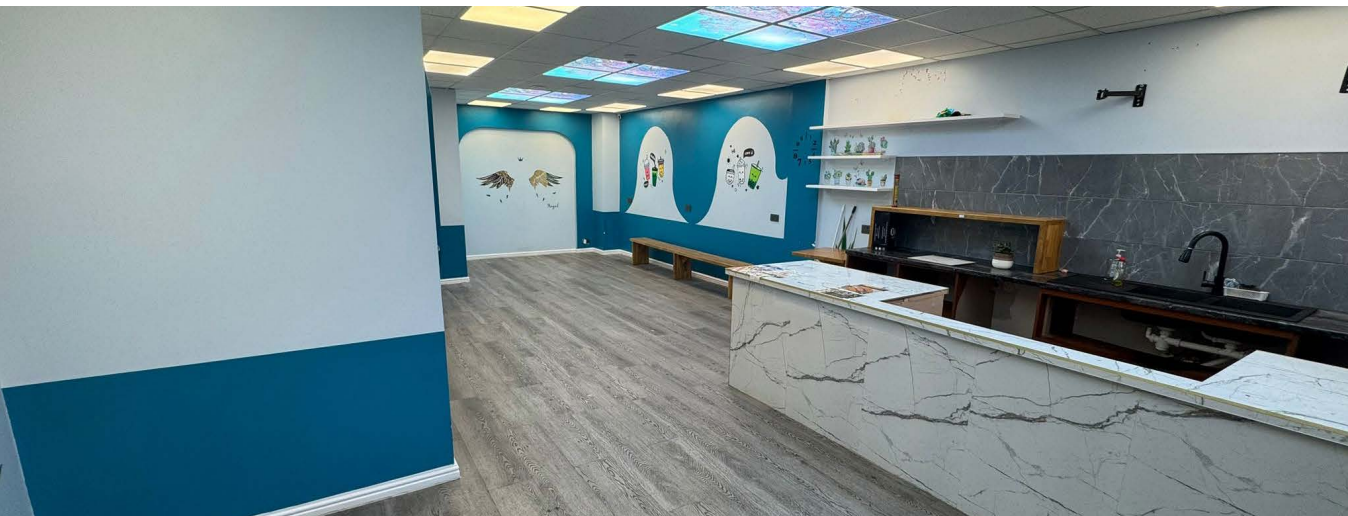
E:116

PLANNING

Subject to planning. It is the ingoing tenant's responsibility to verify that their intended use is acceptable to the Local Planning Authority.

LEGAL COSTS

Each party is responsible for their own legal costs in connection with the granting of a lease.



115

Retail units on site



8.5m

Monthly footfall



£45m

Potential spend



525

Parking Spaces



 View on Google Maps

Chelmsley Wood is approximately 8 miles to the east of Birmingham and 5 miles to the north of Solihull. It benefits from excellent links to the national road network, located approximately 0.5 miles west of the intersection between the M42 and the M6.



98k Catchment Population

within a 10 minute drive time



569k Catchment Population

within a 20 minute drive time



LCP.

part of **M Core**



Rob Ellis

07918 931 081
REllis@lcpproperties.co.uk



Rakesh Joshi

07741 385 322
RJoshi@lcpproperties.co.uk


CREATIVE RETAIL
PROPERTY CONSULTANTS

Ed Purcell

07793 808 974
ed@creative-retail.co.uk

Guy Sankey

07415 408 196
guy@creative-retail.co.uk


M&P
PROPERTY CONSULTANTS

Russ Power

07810 824 374
0117 970 7536
russ@mp-pc.co.uk



MISREPRESENTATION ACT, 1967 London & Cambridge Properties Limited (Company Number 02895002) the registered office of which is at LCP House, Pensnett Estate, Kingswinford, West Midlands DY6 7NA its subsidiaries (as defined in section 156 of the Companies Act 2006) associated companies and employees ("we") give notice that Whilst these particulars are believed to be correct no guarantee or warranty is given, or implied therein, nor do they form any part of a contract. We do our best to ensure all information in this brochure is accurate. If you find any inaccurate information, please let us know and where appropriate, we will correct it. We make no representation that information is accurate and up to date or complete. We accept no liability for any loss or damage caused by inaccurate information. [This brochure gives a large amount of statistical information and there will inevitably be errors in it. Intending purchasers or tenants should not rely on the particulars in this brochure as statements or representations of fact but should satisfy themselves by inspection or otherwise as to the correctness of each of them. We provide this brochure free of charge and on the basis of no liability for the information given. In no event shall we be liable to you for any direct or indirect or consequential loss, loss of profit, revenue or goodwill arising from your use of the information contained herein. All terms implied by law are excluded to the fullest extent permitted by law. No person in our employment has any authority to make or give any representation or warranty whatsoever in relation to the property, SUBJECT TO CONTRACT. We recommend that legal advice is taken on all documentation before entering into a contract. You should be aware that the Code of Practice on Commercial Leases in England and Wales strongly recommends you seek professional advice from a qualified surveyor, solicitor or licensed conveyancer before agreeing or signing a business tenancy agreement. The Code is available through professional institutions and trade associations or through the website: <https://www.rics.org.uk/upholding-professional-standards/sector-standards/real-estate/code-for-leasing-business-premises-1st-edition/>. LCP's privacy notices that apply to its use of your personal information are at www.lcpgroup.co.uk/policies. The privacy notice that applies to you will depend on the nature of your relationship with LCP, and in some cases more than one may apply to you. LCP's privacy policy giving a high level overview of how LCP approaches data protection and your personal information can be found at www.lcpproperties.co.uk/uploads/files/LCP-Privacy-Web-and-Data-Policy-May-2018.pdf.

**Average data taken from research carried out between 7th to 18th February 2018, where cars parking at the centre were counted by an automated system. Number of visitors per car averaged at 2 per vehicle. The figure does not include visitors arriving on public transport or walking to the centre.

17-02-25 FEB25